

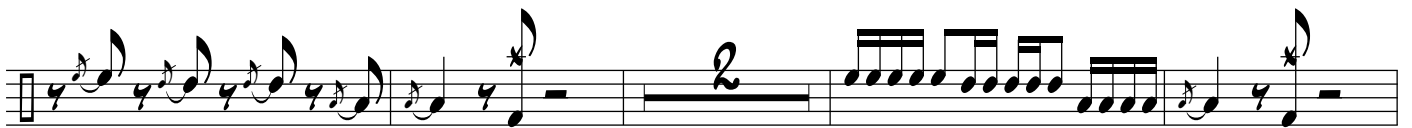
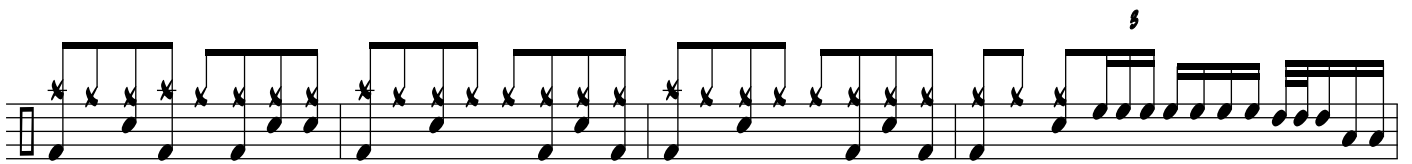
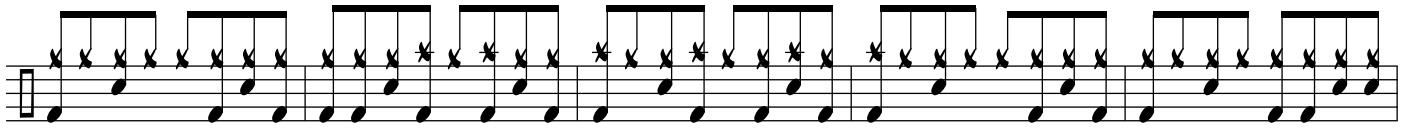
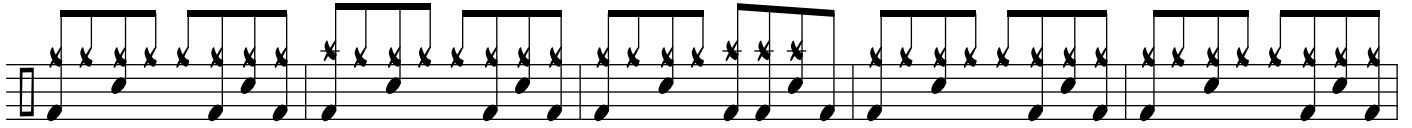
# THE CAMERA EYE

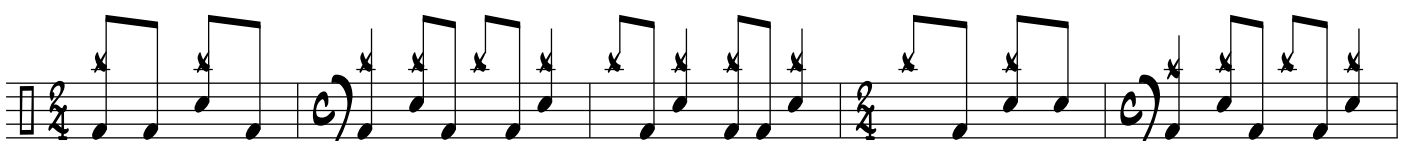
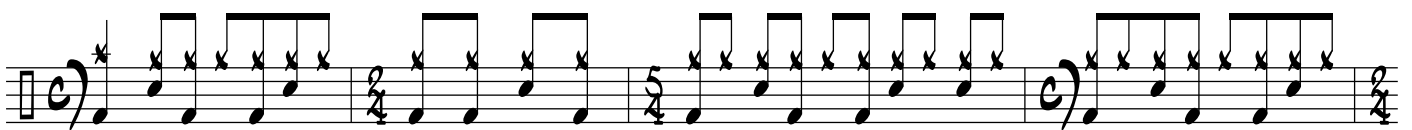
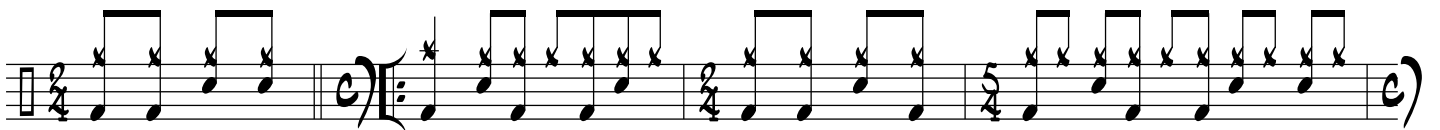
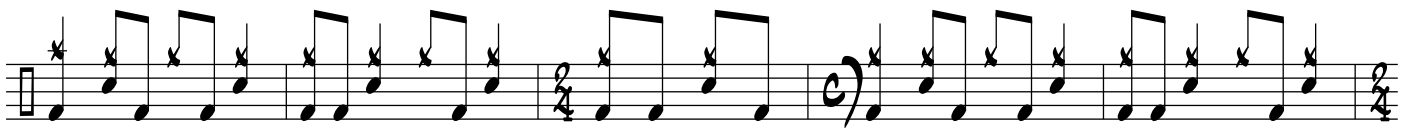
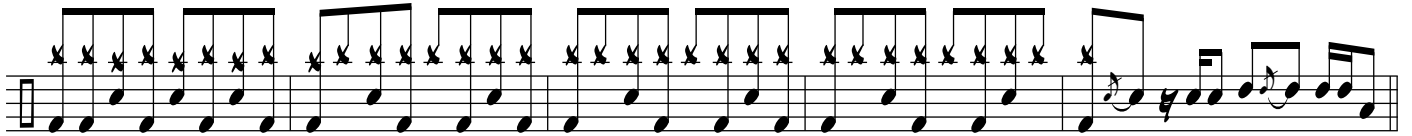
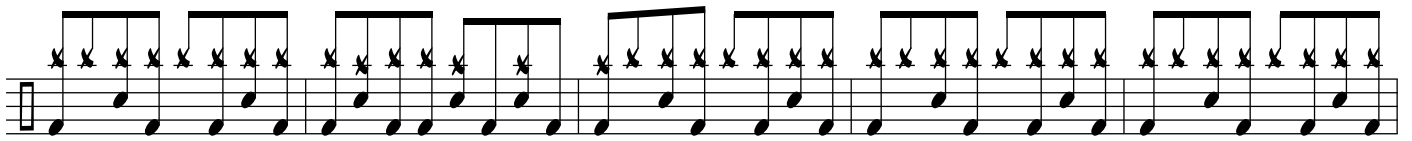
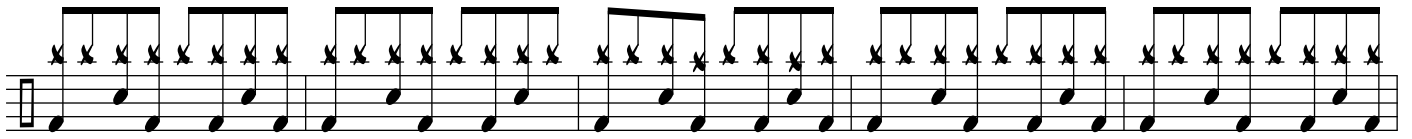
00:45

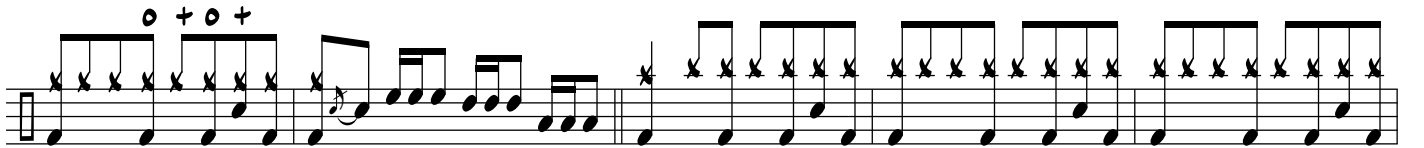
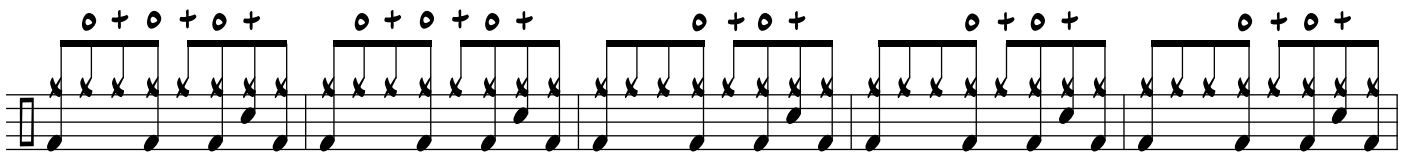
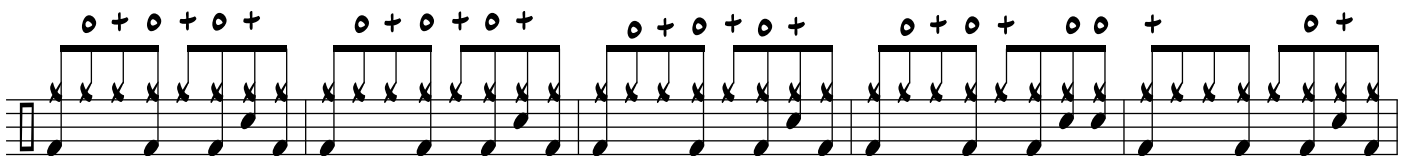
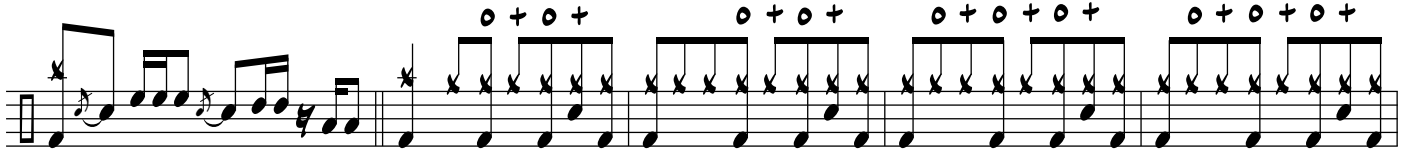
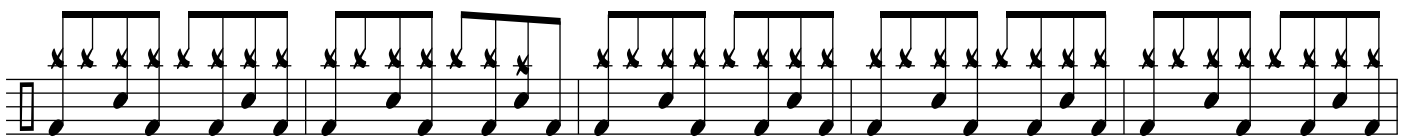
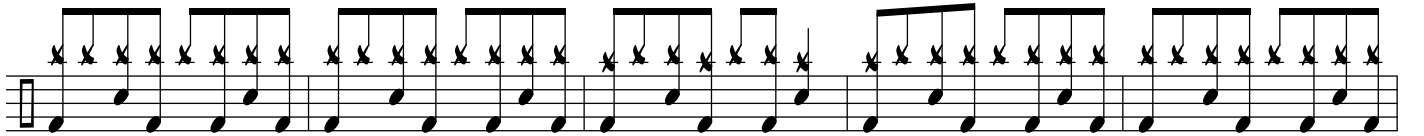
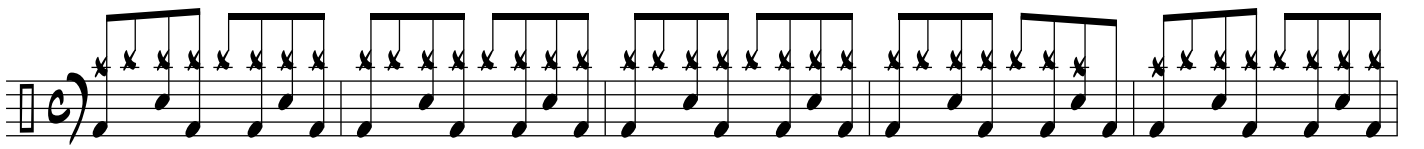
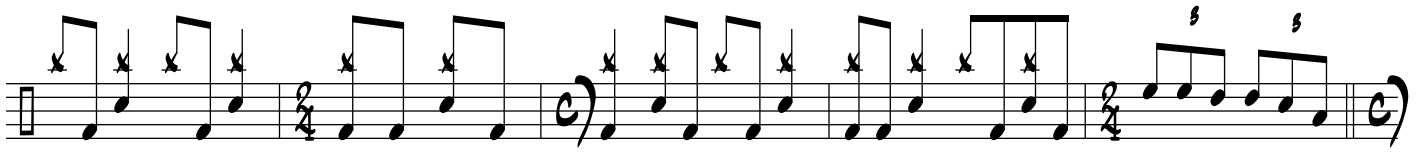
DRUM SET

Drum set notation for 'The Camera Eye' starting at 00:45. The piece is in common time (C) and 2/4. The notation is written on a single staff with a drum set icon. It begins with a 2-measure rest, followed by a series of eighth and sixteenth note patterns. The notation includes various drum symbols: a vertical line for the snare, a vertical line with an 'x' for the hi-hat, and a vertical line with a diagonal slash for the bass drum. The piece features several triplet markings (a '3' over a group of notes) and accents (a '>' over a note). The notation is organized into measures, with some measures containing multiple groups of notes. The piece concludes with a double bar line.

HALF OPEN HI HAT







A musical staff with a treble clef and a key signature of one flat. It contains a series of rhythmic patterns, primarily eighth and sixteenth notes, with asterisks placed above certain notes.

A musical staff with a treble clef and a key signature of one flat. It contains a series of rhythmic patterns, primarily eighth and sixteenth notes, with asterisks placed above certain notes.

A musical staff with a treble clef and a key signature of one flat. It contains a series of rhythmic patterns, primarily eighth and sixteenth notes, with asterisks placed above certain notes.

HALF OPEN HI HAT

A musical staff with a treble clef and a key signature of one flat. It contains a series of rhythmic patterns, primarily eighth and sixteenth notes, with asterisks placed above certain notes. A hat symbol is positioned above the first note of the first measure.

A musical staff with a treble clef and a key signature of one flat. It contains a series of rhythmic patterns, primarily eighth and sixteenth notes, with asterisks placed above certain notes.

A musical staff with a treble clef and a key signature of one flat. It contains a series of rhythmic patterns, primarily eighth and sixteenth notes, with asterisks placed above certain notes. The word "Rit." is written above the staff towards the end, and a slur with an 's' is placed over a group of notes.

A musical staff with a treble clef and a key signature of one flat. It contains a series of rhythmic patterns, primarily eighth and sixteenth notes, with asterisks placed above certain notes. A hat symbol is positioned above the first note of the first measure.

A musical staff with a treble clef and a key signature of one flat. It contains a series of rhythmic patterns, primarily eighth and sixteenth notes, with asterisks placed above certain notes.

A musical staff with a treble clef and a key signature of one flat. It contains a series of rhythmic patterns, primarily eighth and sixteenth notes, with asterisks placed above certain notes. A circled plus sign is positioned above the first note of the first measure.

HALF OPEN HI HAT

○ + ○ + ○ + ○ + ○ +

This staff features a series of rhythmic patterns on a five-line staff. Above the staff, there are five pairs of symbols: a circle followed by a plus sign. The notation includes eighth and sixteenth notes, some with asterisks above them, and rests. The text 'HALF OPEN HI HAT' is written above the staff.

This staff continues the rhythmic patterns from the previous staff, featuring eighth and sixteenth notes with asterisks above them.

RUBATO HI HAT/CYMBAL TRILLS

3

This staff includes a hat icon above a note, followed by a triplet symbol (a '3' over a horizontal line) and a cymbal trill pattern. The text 'RUBATO HI HAT/CYMBAL TRILLS' is written above the staff.

This staff continues the rhythmic patterns, featuring eighth and sixteenth notes with asterisks above them.

This staff continues the rhythmic patterns, featuring eighth and sixteenth notes with asterisks above them.

This staff continues the rhythmic patterns, featuring eighth and sixteenth notes with asterisks above them.

This staff continues the rhythmic patterns, featuring eighth and sixteenth notes with asterisks above them. A slur is placed over the final notes of the staff.

This staff continues the rhythmic patterns, featuring eighth and sixteenth notes with asterisks above them. A cymbal symbol (a 'c' in a circle) is placed above a note.

This staff continues the rhythmic patterns, featuring eighth and sixteenth notes with asterisks above them. A cymbal symbol (a 'c' in a circle) is placed above a note.

The image displays ten staves of musical notation for guitar. Each staff begins with a guitar icon and a clef. The notation includes various rhythmic patterns, accidentals, and dynamic markings. The first staff starts with a 5/4 time signature and a 'c)' marking. The second staff starts with a 2/4 time signature and a 'c)' marking. The third staff starts with a 'c)' marking and a 2/4 time signature. The fourth staff starts with a 'c)' marking and a 2/4 time signature. The fifth staff starts with a 'c)' marking and a 2/4 time signature. The sixth staff starts with a 'c)' marking and a 2/4 time signature. The seventh staff starts with a 'c)' marking and a 2/4 time signature. The eighth staff starts with a 'c)' marking and a 2/4 time signature. The ninth staff starts with a 'c)' marking and a 2/4 time signature. The tenth staff starts with a 'c)' marking and a 2/4 time signature. The notation is in black ink on a white background.

A musical staff with a treble clef and a key signature of one flat. It contains a series of rhythmic patterns, primarily consisting of eighth notes with 'x' marks above them, indicating specific articulation or dynamics. The patterns are grouped into measures across several bars.

A musical staff with a treble clef and a key signature of one flat. It features rhythmic notation with eighth notes and 'x' marks. Above the staff, there are circled plus signs (+) indicating accents or dynamics. The notation is organized into measures across several bars.

A musical staff with a treble clef and a key signature of one flat. It contains rhythmic notation with eighth notes and 'x' marks. Above the staff, there are circled plus signs (+) indicating accents or dynamics. The notation is organized into measures across several bars.

A musical staff with a treble clef and a key signature of one flat. It contains rhythmic notation with eighth notes and 'x' marks. Above the staff, there are circled plus signs (+) indicating accents or dynamics. The notation is organized into measures across several bars.

A musical staff with a treble clef and a key signature of one flat. It contains rhythmic notation with eighth notes and 'x' marks. Above the staff, there are circled plus signs (+) indicating accents or dynamics. The notation is organized into measures across several bars.

A musical staff with a treble clef and a key signature of one flat. It contains rhythmic notation with eighth notes and 'x' marks. Above the staff, there is a circled plus sign (+) indicating an accent or dynamic. The notation is organized into measures across several bars.

**HALF OPEN HI HAT**

A musical staff with a treble clef and a key signature of one flat. It contains rhythmic notation with eighth notes and 'x' marks, representing the 'Half Open Hi Hat' sound. The notation is organized into measures across several bars.

A musical staff with a treble clef and a key signature of one flat. It contains rhythmic notation with eighth notes and 'x' marks, representing the 'Half Open Hi Hat' sound. The notation is organized into measures across several bars.

A musical staff with a treble clef and a key signature of one flat. It contains rhythmic notation with eighth notes and 'x' marks, representing the 'Half Open Hi Hat' sound. The notation is organized into measures across several bars.



Musical staff with rhythmic notation. Notes are marked with asterisks above them, indicating specific performance techniques.

Musical staff with rhythmic notation. Notes are marked with asterisks above them, indicating specific performance techniques.

Musical staff with rhythmic notation. Notes are marked with asterisks above them, indicating specific performance techniques.

Musical staff with rhythmic notation. Notes are marked with asterisks above them, indicating specific performance techniques.

Musical staff with rhythmic notation. Notes are marked with asterisks above them, indicating specific performance techniques.

HALF OPEN HI HAT

Musical staff with rhythmic notation. Notes are marked with asterisks above them, indicating specific performance techniques.

Musical staff with rhythmic notation. Notes are marked with asterisks above them, indicating specific performance techniques.

Musical staff with rhythmic notation. Notes are marked with asterisks above them. Performance markings include 's' (accents), 'Rit.' (ritardando), and 'RUBATO'.

CYMBAL TRILLS, BUZZ ROLL