

CRAZY TRAIN

DRUM SET

The first staff of music is in common time (C) and features a bass clef. It begins with a series of eighth notes, followed by a quarter rest, and continues with a pattern of eighth notes and quarter notes. The notation includes 'x' marks below the notes, indicating specific drum sounds.

The second staff continues the drum set pattern with eighth notes and quarter notes. It includes 'x' marks and two asterisks (*) above the notes, indicating specific drum sounds.

The third staff continues the drum set pattern with eighth notes and quarter notes. It includes 'x' marks and two asterisks (*) above the notes, indicating specific drum sounds.

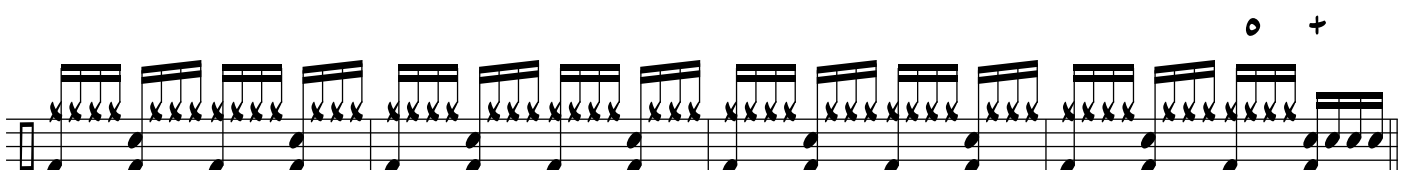
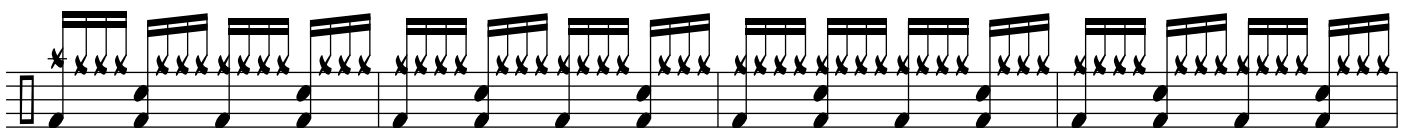
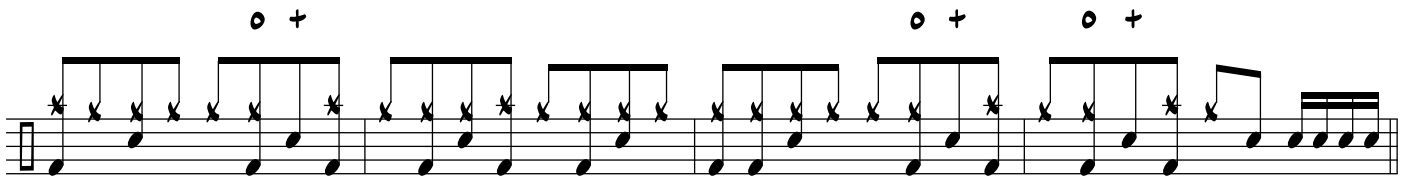
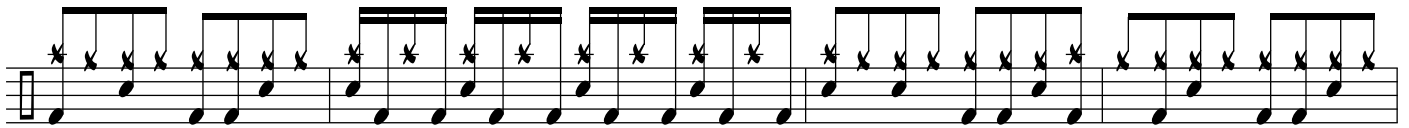
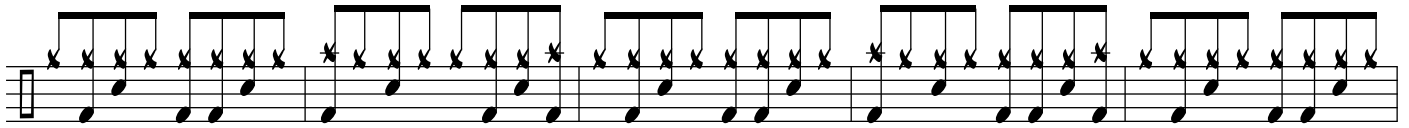
The fourth staff features a more complex pattern with sixteenth notes and eighth notes. It includes 'x' marks, asterisks (*), and a circled plus sign (o+) above the notes, indicating specific drum sounds.

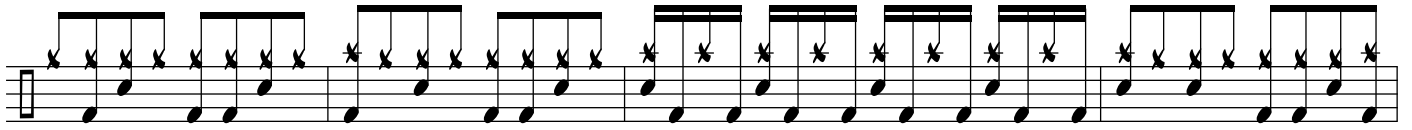
REPEAT 3X

The fifth staff is a repeat of the pattern from the fourth staff, featuring sixteenth notes, eighth notes, and 'x' marks with asterisks (*).

The sixth staff is another repeat of the pattern from the fourth staff, featuring sixteenth notes, eighth notes, and 'x' marks with asterisks (*). It includes a circled plus sign (o+) above the notes.

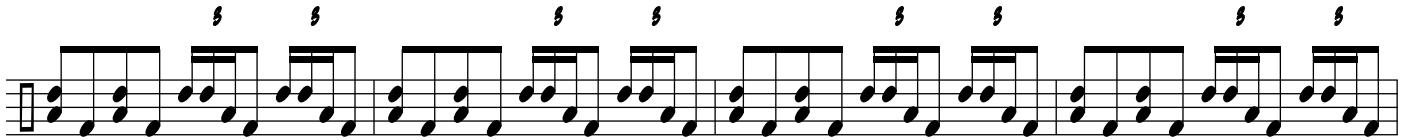
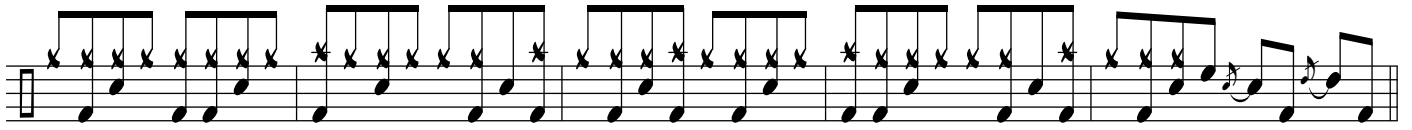
The seventh staff is a final repeat of the pattern from the fourth staff, featuring sixteenth notes, eighth notes, and 'x' marks with asterisks (*).

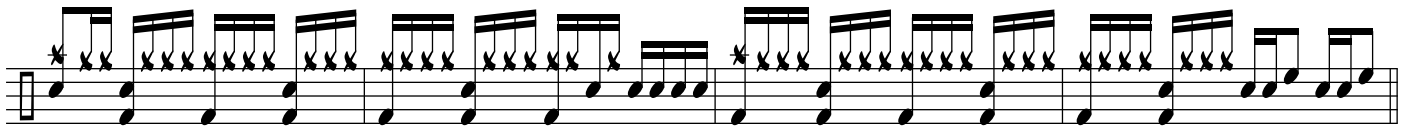




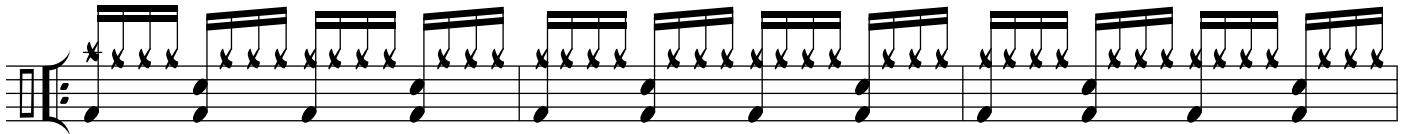
o +

o +

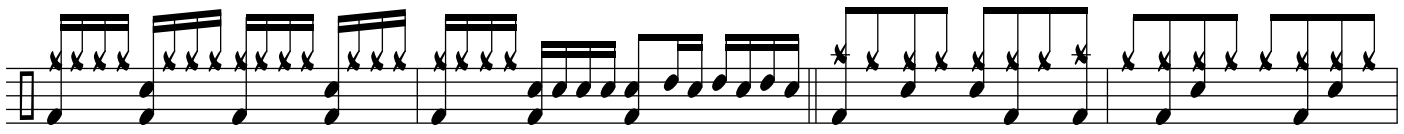
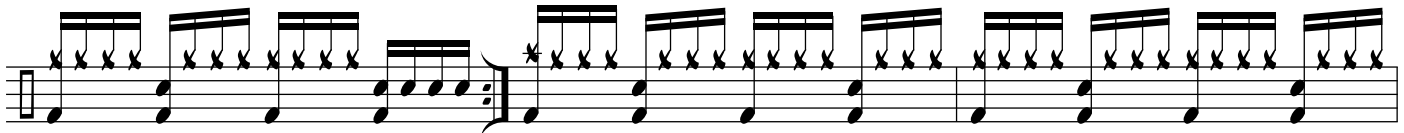




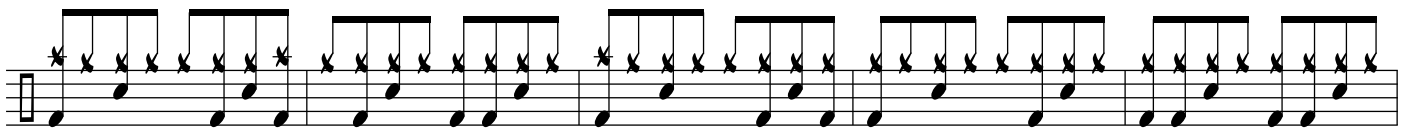
REPEAT 3x



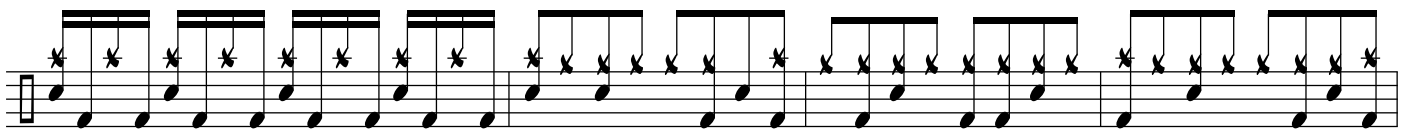
o +



o +



o +



o +

REPEAT & FADE



s s s s s s

